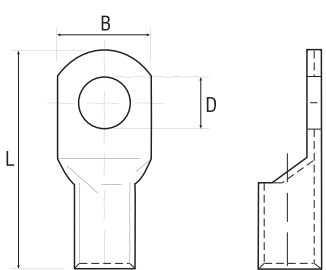




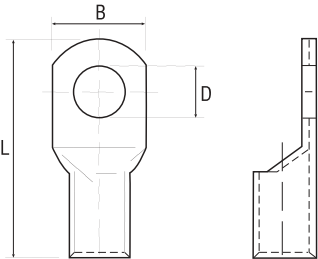
Copper Tube Terminals



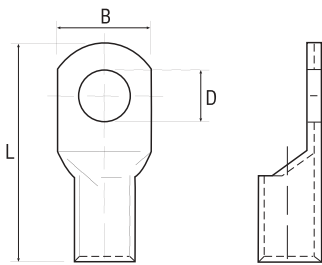
Part N°	Wire size mm ²	Dimensions mm.			Bag		Master
		Ø D	B	L			
TD-1.5-4	1.5	4.3	8.0	17.0	100	3.000	24.000
TD-1.5-5	1.5	5.3	8.0	17.0	100	3.000	24.000
TD-2.5-4	2.5	4.3	8.0	18.0	100	2.000	16.000
TD-2.5-5	2.5	5.3	8.0	20.0	100	2.000	16.000
TD-2.5-6	2.5	6.4	9.0	20.0	100	2.000	16.000
TD-4-4	4.0	4.3	10.0	21.0	100	2.000	16.000
TD-4-5	4.0	5.3	10.0	21.0	100	2.000	16.000
TD-4-6	4.0	6.4	10.0	21.0	100	2.000	16.000
TD-6-4	6.0	4.3	10.0	23.0	100	1.000	8.000
TD-6-5	6.0	5.3	10.0	26.0	100	1.000	8.000
TD-6-6	6.0	6.4	10.0	26.0	100	1.000	8.000
TD-6-8	6.0	8.4	12.0	27.5	100	1.000	8.000
TD-6-10	6.0	10.5	16.0	34.0	100	1.000	8.000
TD-10-5	10.0	5.3	12.0	26.5	100	1.000	8.000
TD-10-6	10.0	6.4	12.0	26.5	100	1.000	8.000
TD-10-8	10.0	8.4	12.0	26.5	100	1.000	8.000
TD-10-10	10.0	10.5	18.0	35.5	100	800	6.400
TD-10-12	10.0	13.0	18.5	39.5	100	500	4.000
TD-16-4	16.0	4.3	12.4	31.0	100	800	6.400
TD-16-5	16.0	5.3	12.4	31.0	100	800	6.400
TD-16-6	16.0	6.4	12.4	31.0	100	800	6.400
TD-16-8	16.0	8.4	12.4	31.0	100	800	6.400
TD-16-10	16.0	10.5	15.0	33.0	100	600	4.800
TD-16-12	16.0	13.0	20.0	42.5	100	500	4.000
TD-25-5	25.0	5.3	14.0	32.0	100	500	4.000
TD-25-6	25.0	6.4	14.0	32.0	100	500	4.000
TD-25-8	25.0	8.4	18.0	34.0	100	500	4.000
TD-25-10	25.0	10.5	18.0	34.0	100	500	4.000
TD-25-12	25.0	13.0	20.0	45.0	100	400	3.200
TD-35-6	35.0	6.4	16.0	38.0	100	300	2.400


Copper Tube Terminals



	Part N°	Wire size mm ²	Dimensions mm.			Bag		Master
			Ø D	B	L			
	TD-35-8	35.0	8.4	16.0	38.0	100	300	2.400
	TD-35-10	35.0	10.5	17.5	40.5	100	300	2.400
	TD-35-12	35.0	13.0	18.0	47.5	100	200	1.600
	TD-50-6	50.0	6.4	18.0	43.0	50	200	1.600
	TD-50-8	50.0	8.4	18.0	43.0	50	200	1.600
	TD-50-10	50.0	10.5	18.0	43.0	50	200	1.600
	TD-50-12	50.0	13.0	18.0	51.5	50	200	1.600
	TD-50-14	50.0	15.0	25.0	55.5	50	150	1.200
	TD-50-16	50.0	17.0	26.0	59.5	50	100	800
	TD-70-6	70.0	6.4	21.8	50.0	50	100	800
	TD-70-8	70.0	8.4	21.8	50.0	50	100	800
	TD-70-10	70.0	10.5	21.8	50.0	50	100	800
	TD-70-12	70.0	13.0	21.8	50.0	50	100	800
	TD-70-14	70.0	15.0	21.8	59.0	50	100	800
	TD-70-16	70.0	17.0	26.0	63.0	50	100	800
	TD-95-5	95.0	5.3	25.0	57.0	50	100	800
	TD-95-6	95.0	6.4	25.0	57.0	50	100	800
	TD-95-8	95.0	8.4	25.0	57.0	50	100	800
	TD-95-10	95.0	10.5	25.0	57.0	50	100	800
	TD-95-12	95.0	13.0	25.0	57.0	50	100	800
TD-95-14	95.0	15.0	25.0	65.5	50	100	800	
TD-95-16	95.0	17.0	27.0	69.5	50	100	800	
TD-95-20	95.0	21.0	29.5	77.5	50	50	400	
TD-120-8	120.0	8.4	28.0	60.0	25	50	400	
TD-120-10	120.0	10.5	28.0	60.0	25	50	400	
TD-120-12	120.0	13.0	28.0	60.0	25	50	400	
TD-120-14	120.0	15.0	28.0	66.0	25	50	400	
TD-120-16	120.0	17.0	28.0	66.0	25	50	400	
TD-150-10	150.0	10.5	30.5	69.0	25	50	400	
TD-150-12	150.0	13.0	30.5	69.0	25	50	400	

Copper Tube Terminals



Part N°	Wire size mm ²	Dimensions mm.			Bag		Master
		Ø D	B	L			
TD-150-14	150.0	15.0	30.5	69.0	25	50	400
TD-150-16	150.0	17.0	30.5	69.0	25	50	400
TD-150-20	150.0	21.0	30.5	69.0	25	50	400
TD-185-10	185.0	10.5	34.0	79.0	10	40	320
TD-185-12	185.0	13.0	34.0	79.0	10	40	320
TD-185-14	185.0	15.0	34.0	79.0	10	40	320
TD-185-16	185.0	17.0	34.0	79.0	10	40	320
TD-185-20	185.0	21.0	34.0	79.0	10	40	320
TD-240-10	240.0	10.5	38.0	93.0	10	20	160
TD-240-12	240.0	13.0	38.0	93.0	10	20	160
TD-240-14	240.0	15.0	38.0	93.0	10	20	160
TD-240-16	240.0	17.0	38.0	93.0	10	20	160
TD-240-18	240.0	19.0	38.0	93.0	10	20	160
TD-240-20	240.0	21.0	38.0	93.0	10	20	160
TD-300-12	300.0	13.0	43.0	100.0	10	20	-
TD-300-14	300.0	15.0	43.0	100.0	10	20	-
TD-300-16	300.0	17.0	43.0	100.0	10	20	-
TD-300-18	300.0	19.0	43.0	100.0	10	20	-
TD-300-20	300.0	21.0	43.0	100.0	10	20	-
TD-400-12	400.0	13.0	52.0	116.0	5	15	-
TD-400-16	400.0	17.0	52.0	116.0	5	15	-
TD-400-18	400.0	19.0	52.0	116.0	5	15	-
TD-400-20	400.0	21.0	52.0	116.0	5	15	-
TD-500-16	500.0	17.0	56.0	126.0	5	10	-
TD-500-18	500.0	19.0	56.0	126.0	5	10	-
TD-500-20	500.0	21.0	56.0	126.0	5	10	-
TD-630-18	630.0	17.0	65.0	140.0	2	10	-
TD-630-20	630.0	21.0	65.0	140.0	2	10	-
TD-800	800.0	-	73.5	170.0	1	1	-
TD-1000	1000.0	-	81.0	200.0	1	1	-